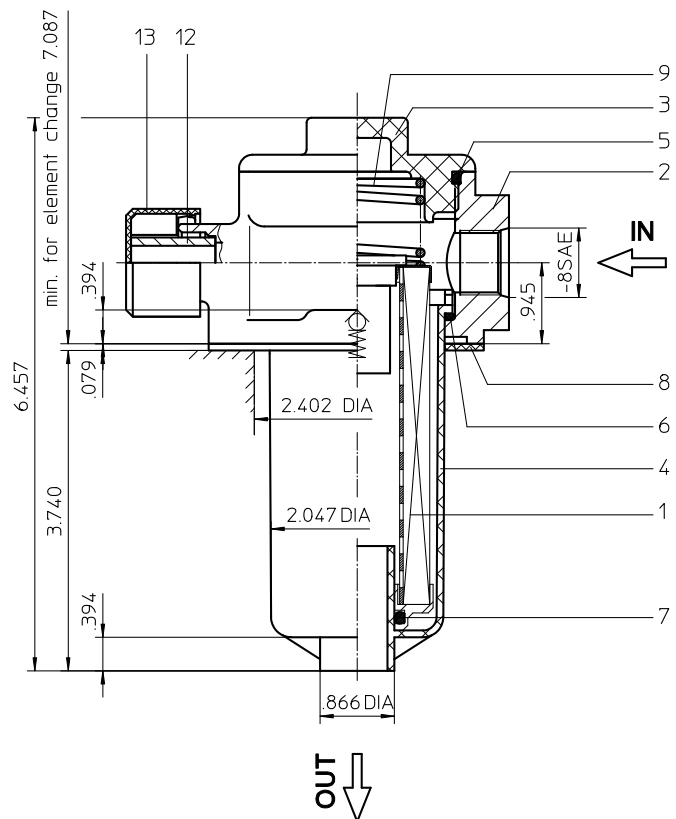
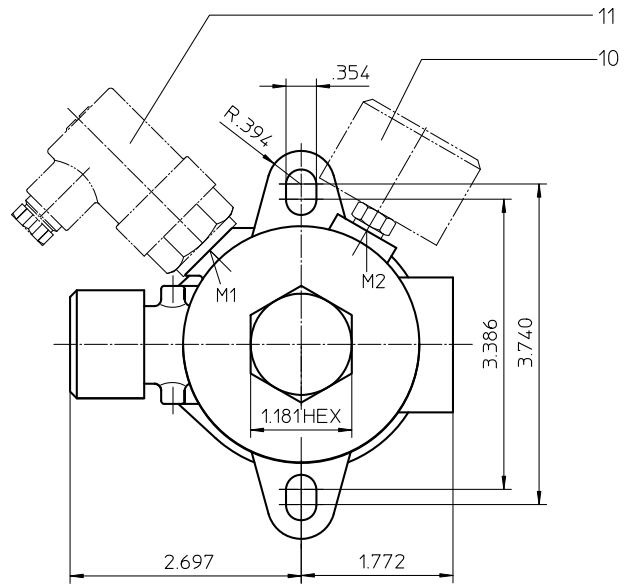


# Series TEFB 41

## 145 PSI



weight: approx. 2.0 lbs.

Dimensions: inches

Designs and performance values are subject to change.



Powering Business Worldwide

# Return Line Filter

## Series TEFB 41

### 145 PSI

#### Description:

Return-line filter series TEFB 41 have a working pressure up to 145 PSI. Pressure peaks will be absorbed by a sufficient margin of safety.

The TEFB-filters are directly mounted to the reservoir and connected to the return-line. No connection is needed for the build-in air filter. The air filter has a 10 µm disposable element.

The filter element consists of a star-shaped, pleated filter material which is supported on the inside by a perforated core tube and is bonded to the end caps with a high-quality adhesive. The flow is from outside to inside.

For cleaning the stainless steel mesh element or changing the filter element, remove the cover and take out the element. The mesh elements are not guaranteed to maintain 100% performance after cleaning.

Filters finer than 40 µm use the disposable elements made of paper or microglass. Filter elements as fine as 5 µm(c) are available; finer filter elements on request.

Eaton filter elements are known as stable elements which have excellent filtration capabilities and a high dirt retaining capacity, therefore having a long service life. Due to its practical design, the return-line filter is easy to service.

Eaton filter can be used for petroleum-based fluids, HW emulsions, water glycols, most synthetic fluids and lubrication fluids. Consult factory for specific fluid applications.

When changing the filter element, a detachable connection between the filter head and the filter bowl prevents dirty oil from flowing into the tank.

#### 1. Type index:

##### 1.1. Complete filter: (ordering example)

**TEFB. 41. 10VG. 16. S. P. -. UG. 3. -. E1. O** filter with by-pass valve

1	2	3	4	5	6	7	8	9	10	11	12
---	---	---	---	---	---	---	---	---	----	----	----

**TEFB. 41. 10VG. 30. E. P. -. UG. 3. -. E1. O** filter without by-pass valve

1	2	3	4	5	6	7	8	9	10	11	12
---	---	---	---	---	---	---	---	---	----	----	----

##### 1 series:

TEFB = tank-mounted return-line-filter with breather filter

##### 2 nominal size: 41

##### 3 filter-material:

80G, 40G, 25G stainless steel wire mesh  
25VG, 16VG, 10VG, 6VG, 3VG microglass  
10P paper (only with 01E.41)

##### 4 filter element collapse rating:

16 = 01E.41 for Δp 232 PSI (standard with by-pass valve)  
30 = 01E.60 for Δp 435 PSI (standard without by-pass valve)

##### 5 filter element design:

S = with by-pass valve Δp 29 PSI (01E.41)  
E = without by-pass valve (01E.60)

##### 6 sealing material:

P = Nitrile (NBR)  
V = Viton (FPM)

##### 7 filter element specification:

- = standard  
IS06 = for HFC application, see sheet-no. 31601

##### 8 process connection:

UG = thread connection

##### 9 process connection size:

3 = - 8 SAE

##### 10 filter housing specification:

- = standard  
IS06 = for HFC application, see sheet-no. 31605

##### 11 clogging indicator at M1:

- = without  
O = visual, see sheet-no. 1616  
E1 = pressure switch, see sheet-no. 1616  
E2 = pressure switch, see sheet-no. 1616  
E5 = pressure switch, see sheet-no. 1616

##### 12 clogging indicator at M2:

possible indicators see position 11 of the type index

To add an indicator to your filter, use the corresponding indicator data sheet to find the indicator details and add them to the filter assembly model code.

##### 1.2. Filter element: (ordering example)

**01E. 41. 10VG. 16. S. P. -** with by-pass valve

1	2	3	4	5	6	7
---	---	---	---	---	---	---

**01E. 60. 10VG. 30. E. P. -** without by-pass valve

1	2	3	4	5	6	7
---	---	---	---	---	---	---

##### 1 series:

01E. = filter element according to company standard

##### 2 nominal size: 41, 60

##### 3 - 7 see type index-complete filter

## Technical data:

operating temperature:	14°F to +212°F
operating medium	mineral oil, other media on request
max. operating pressure:	145 PSI
opening pressure by-pass valve:	29 PSI
process connection:	thread connection
housing material standard:	Al-cast, glass fiber reinforced polyamide (screw plug, filter bowl)
sealing material:	Nitrile (NBR) or Viton (FPM), other materials on request
installation position:	vertical
volume tank:	.05 Gal.

Classified under the Pressure Equipment Directive 2014/68/EU for mineral oil (fluid group 2), Article 4, Para. 3.  
 Classified under ATEX Directive 2014/34/EU according to specific application (see questionnaire sheet-no. 34279-4).

## Pressure drop flow curves:

### Filter calculation/sizing

The pressure drop of the assembly at a given flow rate Q is the sum of the housing  $\Delta p$  and the element  $\Delta p$  and is calculated as follows:

$$\Delta p_{assembly} = \Delta p_{housing} + \Delta p_{element}$$

$$\Delta p_{housing} = (\text{see } \Delta p = f(Q) \text{ - characteristics})$$

$$\Delta p_{element} (PSI) = Q (GPM) \times \frac{MSK}{1000} \left( \frac{PSI}{GPM} \right) \times v (SUS) \times \frac{\rho}{0.876} \left( \frac{kg}{dm^3} \right)$$

For ease of calculation our Filter Selection tool is available online at [www.eatonpowersource.com/calculators/filtration/](http://www.eatonpowersource.com/calculators/filtration/)

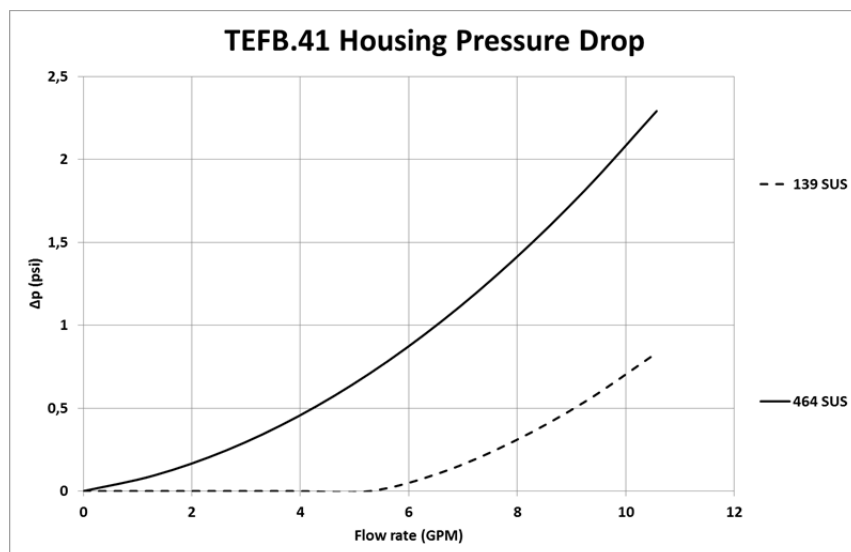
### Material gradient coefficients (MSK) for filter elements

The material gradient coefficients in psi/gpm apply to mineral oil (HLP) with a density of 0.876 kg/dm<sup>3</sup> and a kinematic viscosity of 139 SUS (30 mm<sup>2</sup>/s). The pressure drop changes proportionally to the change in kinematic viscosity and density.

TEFB	VG					G			P
	3VG	6VG	10VG	16VG	25VG	25G	40G	80G	10P
41 (without bypass)	6.748	4.685	2.999	2.577	1.760	0.2002	0.1868	0.1280	1.469
41 (with bypass)	6.748	4.685	2.999	2.577	1.760	0.2002	0.1868	0.1280	-

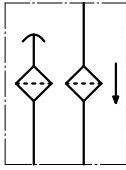
### $\Delta p = f(Q)$ – characteristics according to ISO 3968

The pressure drop characteristics apply to mineral oil (HLP) with a density of 0.876 kg/dm<sup>3</sup>. The pressure drop changes proportionally to the density.

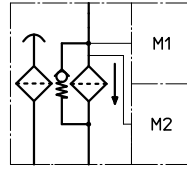


## Symbols:

without indicator



with by-pass valve



visual O



electric contact maker E1



electric contact breaker E5



electric contact maker/breaker E2



## Spare parts:

item	qty.	designation	dimension	article-no.	
1	1	filter element with by-pass	01E.41...		
	1	filter element without by-pass	01E.60...		
2	1	filter head	TEFB 41-55	308751	
3	1	screw plug	M60 x 2	303621	
4	1	filter bowl	TEF 41	306673	
5	1	O-ring	56 x 3	305072 (NBR)	305322 (FPM)
6	1	O-ring	50 x 2,5	305239 (NBR)	305321 (FPM)
7	1	O-ring	22 x 3,5	304341 (NBR)	304392 (FPM)
8	1	gasket	.08 thick	303039	
9	1	spring	DA = 40	304982	
10	1	clogging indicator visual	O	301721	
11	1	clogging indicator electric	E1, E2 or E5	see sheet-no. 1616	
12	1	filter element breather	01BFE.70	301865	
13	1	protection cap		305312	

## Test methods:

Filter elements are tested according to the following ISO standards:

ISO 2941	Verification of collapse/burst resistance
ISO 2942	Verification of fabrication integrity
ISO 2943	Verification of material compatibility with fluids
ISO 3723	Method for end load test
ISO 3724	Verification of flow fatigue characteristics
ISO 3968	Evaluation of pressure drop versus flow characteristics
ISO 16889	Multi-pass method for evaluating filtration performance

### North America

44 Apple Street  
Tinton Falls, NJ 07724  
Toll Free: 800 656-3344  
(North America only)  
Tel: +1 732 212-4700

### Europe/Africa/Middle East

Auf der Heide 2  
53947 Nettersheim, Germany  
Tel: +49 2486 809-0

Friedensstraße 41  
68804 Altlußheim, Germany  
Tel: +49 6205 2094-0

An den Nahewiesen 24  
55450 Langenlonsheim, Germany  
Tel: +49 6704 204-0

### China

No. 3, Lane 280,  
Linhong Road  
Changning District, 200335  
Shanghai, P.R. China  
Tel: +86 21 5200-0099

### Singapore

100G Pasir Panjang Road #07-08  
Singapore 118523  
Tel: +65 6825-1668

### Brazil

Rua Clark, 2061 - Macuco  
13279-400 - Valinhos, Brazil  
Tel: +55 11 3616-8400

For more information, please  
email us at [filtration@eaton.com](mailto:filtration@eaton.com)  
or visit [www.eaton.com/filtration](http://www.eaton.com/filtration)

© 2018 Eaton. All rights reserved. All trademarks and registered trademarks are the property of their respective owners. All information and recommendations appearing in this brochure concerning the use of products described herein are based on tests believed to be reliable. However, it is the user's responsibility to determine the suitability for his own use of such products. Since the actual use by others is beyond our control, no guarantee, expressed or implied, is made by Eaton as to the effects of such use or the results to be obtained. Eaton assumes no liability arising out of the use by others of such products. Nor is the information herein to be construed as absolutely complete, since additional information may be necessary or desirable when particular or exceptional conditions or circumstances exist or because of applicable laws or government regulations.